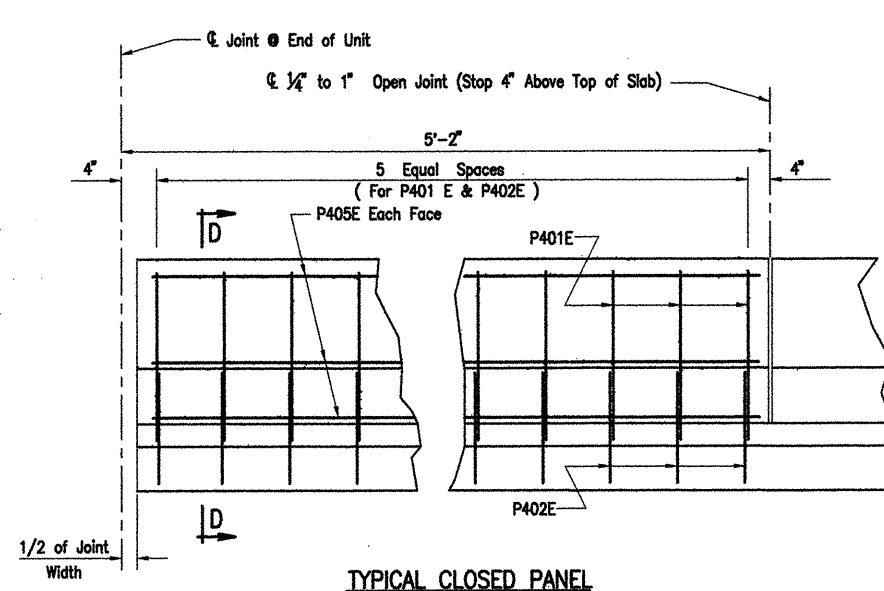
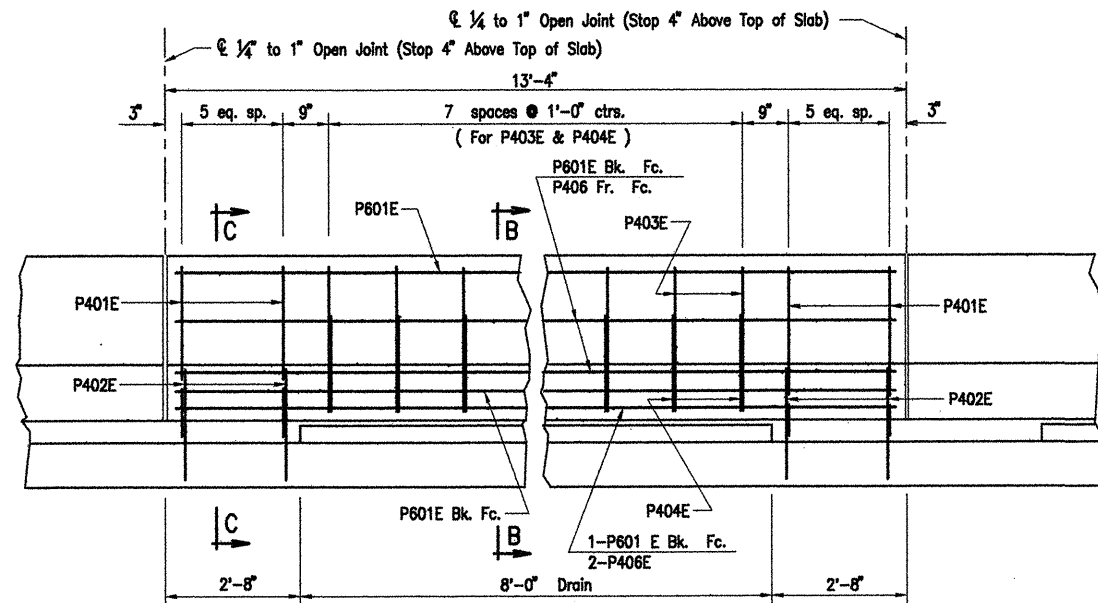


DATE REVISED	DATE FILMED	DATE REVISED	DATE FILMED	FED. ROAD NO.	STATE	FED. AID PROJ. NO.	SHEET NO.	TOTAL SHEETS
					ARK.			
						JOB NO. 110503	78	233
						06829	308' UNIT	41882



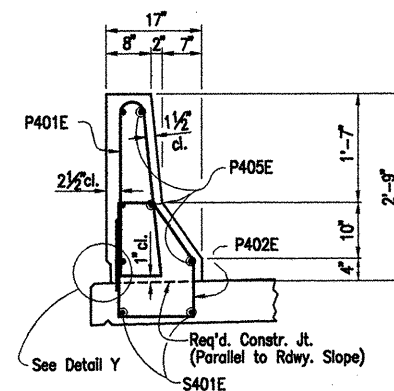
TYPICAL CLOSED PANEL



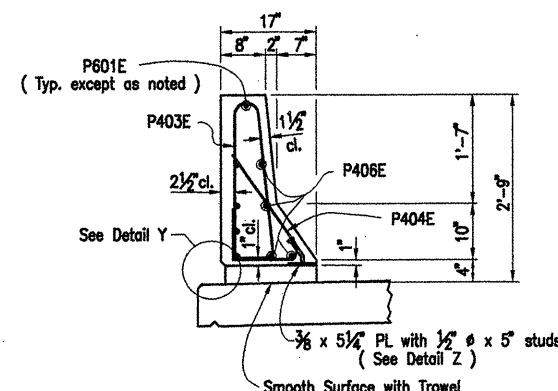
TYPICAL OPEN PANEL

### ELEVATION OF TYPICAL PARAPET RAIL

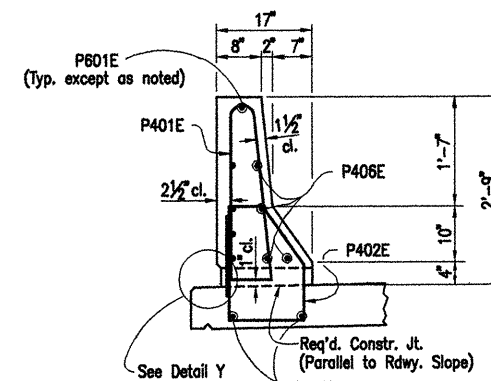
(As viewed from roadway side of parapet)  
N.T.S.



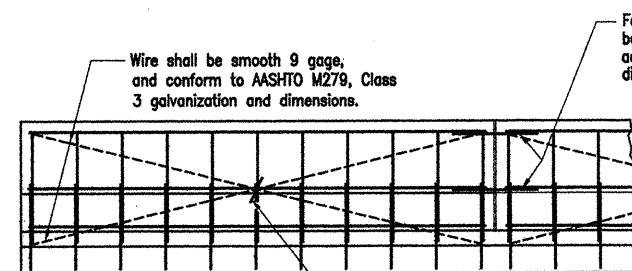
SECTION D-D  
N.T.S.



SECTION B-B  
N.T.S.



SECTION C-C  
N.T.S.



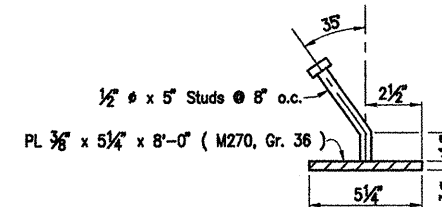
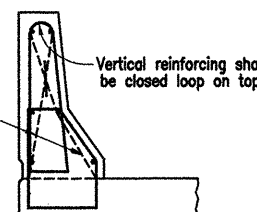
Bar to tighten smooth wire shall be epoxy coated or fiberglass.

All panels shall be braced as shown to prevent racking. All open joints shall be sawed as soon as practical to a minimum width of 1/4". To control cracking before sawing all joints must be grooved before the concrete is set. Sawing of the joints must be controlled so it will follow the grooved joint.

DETAILS OF OPTIONAL SLIPFORMING OF CONCRETE PARAPET RAIL (OPEN OR CLOSED)  
N.T.S.

All smooth wire bracing shall be placed on the inside faces of the reinforcing

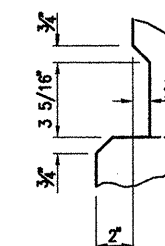
The extruded parapet shall conform to the horizontal and vertical lines shown on the plans or as directed by the Engineer and shall present a smooth, uniform appearance and texture.



DETAIL Z  
N.T.S.

Note:

The surfaces of the 3/8" Plates which will not be in contact with concrete shall be painted with aluminum epoxy paint in accordance with Section 638 or as approved by the Engineer. Only one coat is required and shall be applied in the fabricator's shop. Painting will not be paid for directly, but will be considered subsidiary to Structural Steel or Class S(AE) Concrete.



DETAIL Y  
N.T.S.

ALTERNATE NO. 1  
ROC ROE BRIDGE  
DETAILS OF 308'-0" CONT.  
PRESTRESSED CONCRETE GIRDER UNITS  
(SHEET 5 OF 7)

ROC ROE & WHITE RIVER RELIEF  
STRS. & APPRS. (CLARENDON) (F)  
MONROE COUNTY

ROUTE 79 SEC. 13

ARKANSAS STATE HIGHWAY COMMISSION  
LITTLE ROCK, ARK.

Engstrom/Modjeski and Masters, Inc.

DRAWN BY: GPT DATE: Sept. 07  
CHECKED BY: YO DATE: Nov. 01  
DESIGNED BY: GPT DATE: Nov. 01  
BRIDGE NO. 06829 DRAWING NO. 41882

